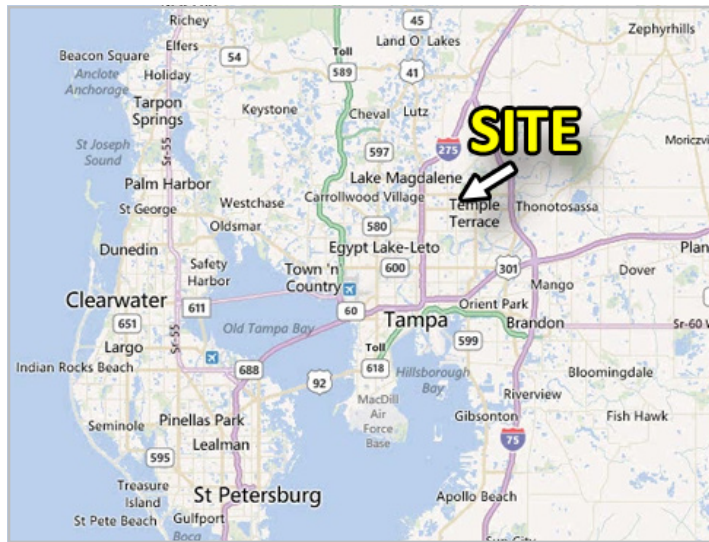
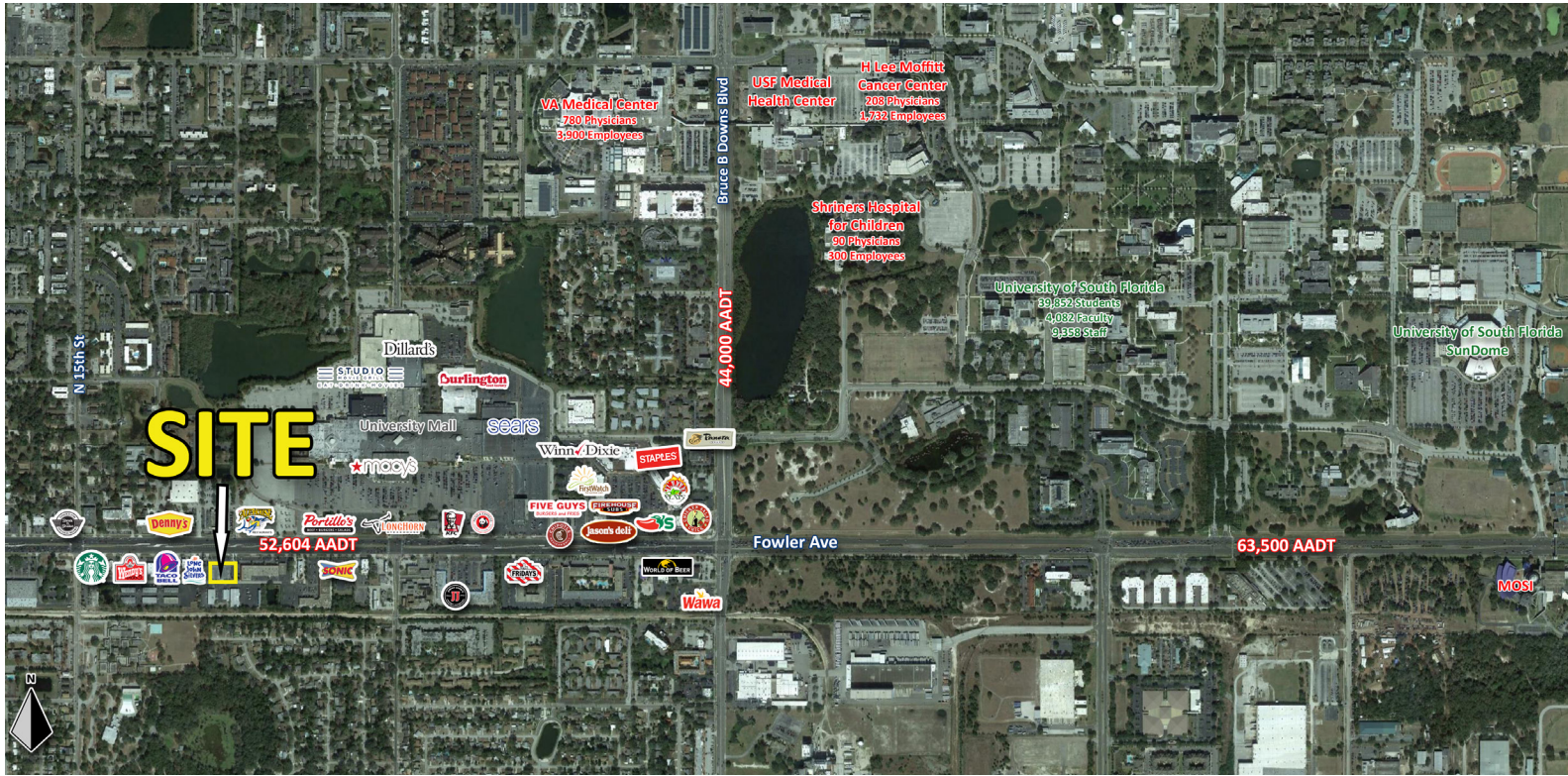


# FOR LEASE

# SHOPPES ON FOWLER

1715 E Fowler Ave, Tampa, FL 33612



## Property Information

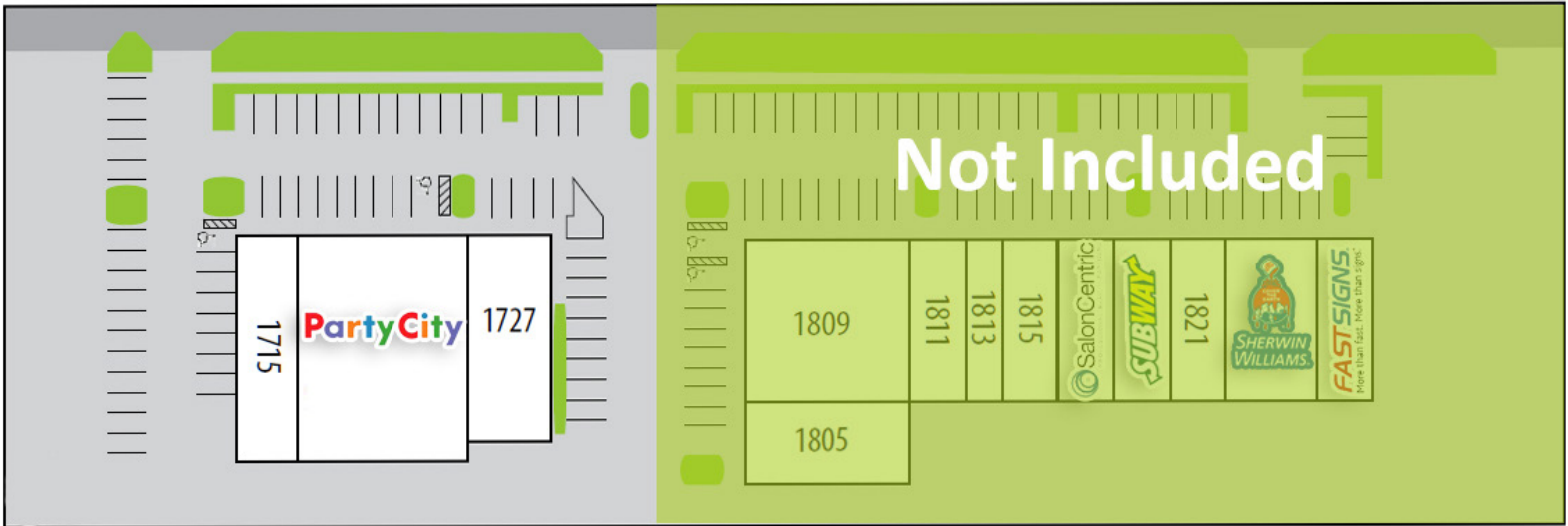
- 10,300 SF Local Retail Available
- Strong Traffic Counts ( 52,604 AADT Fowler Ave)
- 66 parking spots available
- Less than 2 miles west of the University of South Florida
- Located in the highly desirable University submarket with 40,000 students
- Sits in the heart of the University Mall revitalization area
- Area employers: University of South Florida, H. Lee Moffitt Cancer Center, VA Hospital, Florida Hospital, Shriners's Hospital, Busch Gardens



**For More Information:**  
**Ryan Waddell**  
 Vice President  
 RWaddell@SERetailGroup.com  
 813. 803. 6401

DEMOGRAPHICS	1-Mile	3-Mile	5-Mile
Population	26,545	150,758	306,896
Avg HH Income	\$31,622	\$41,446	\$57,198
Households	10,551	59,547	123,592
Employees	17,878	78,623	136,118





UNIT	TENANT	SF
1715	Gold N Diamonds Tampa	2,046
1719	AVAILABLE	10,300
1727	LED King	4,000
1805	Scuba Haven	2,126
1809	TSA Liquor	3,313
1811 A&B	A & M Greek	3,962
1813	Friends Pharmacy	1,500

UNIT	TENANT	SF
1815	Wireless World	2,400
1817	Salon Centric	2,400
1819	Subway	2,400
1821	Bib N Tux	2,400
1825	Sherwin Williams	4,800
1827	Fast Signs	2,400

