

FOR LEASE

US HWY 19 Professional Office / Medical Space

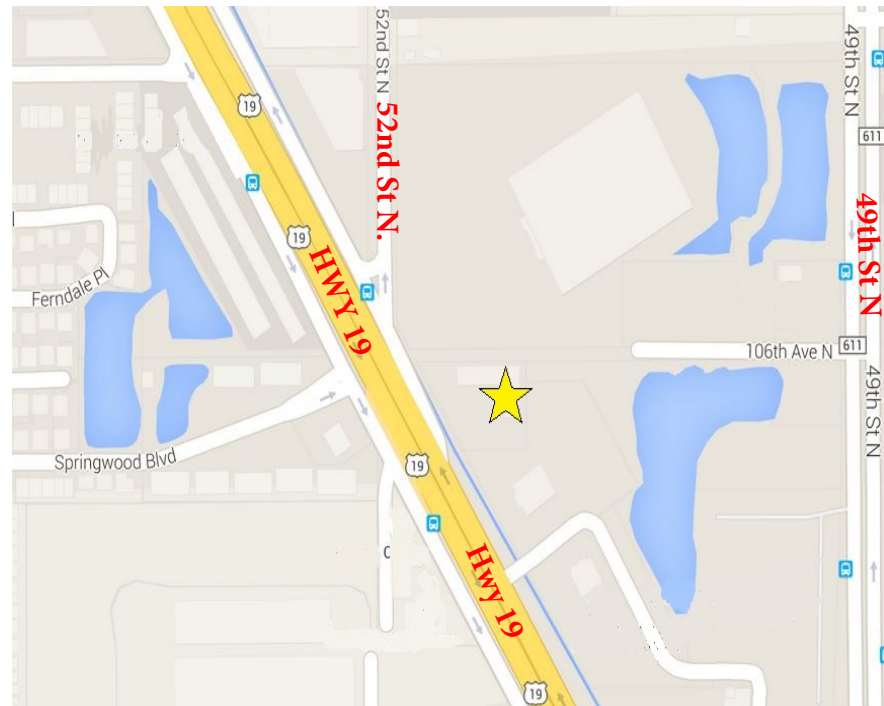
10575 US HWY 19 N. Pinellas Park, FL 33782



Highlights

- Unit 1: 3,000 Sq. Ft. of Built Out Medical Office
- Unit 2: 1,800 Sq. Ft. of Built out General Office
- Both units can be combined for a total of 4,800 Sq. Ft.
- Abundant parking field
- Heavy power
- Water to multiple offices
- Excellent Visibility, 56,222 VPD

Lease Rate: \$13.00 Per SF
Modified Gross
(Net of Utilities and Sales Tax)



For further information contact:

Bryan Jerome, CCIM

Phone: 727.527.4602

Bryan@ccrcommercial.com

Evan Jerome

Phone: 727.527.4602

Evan@ccrcommercial.com



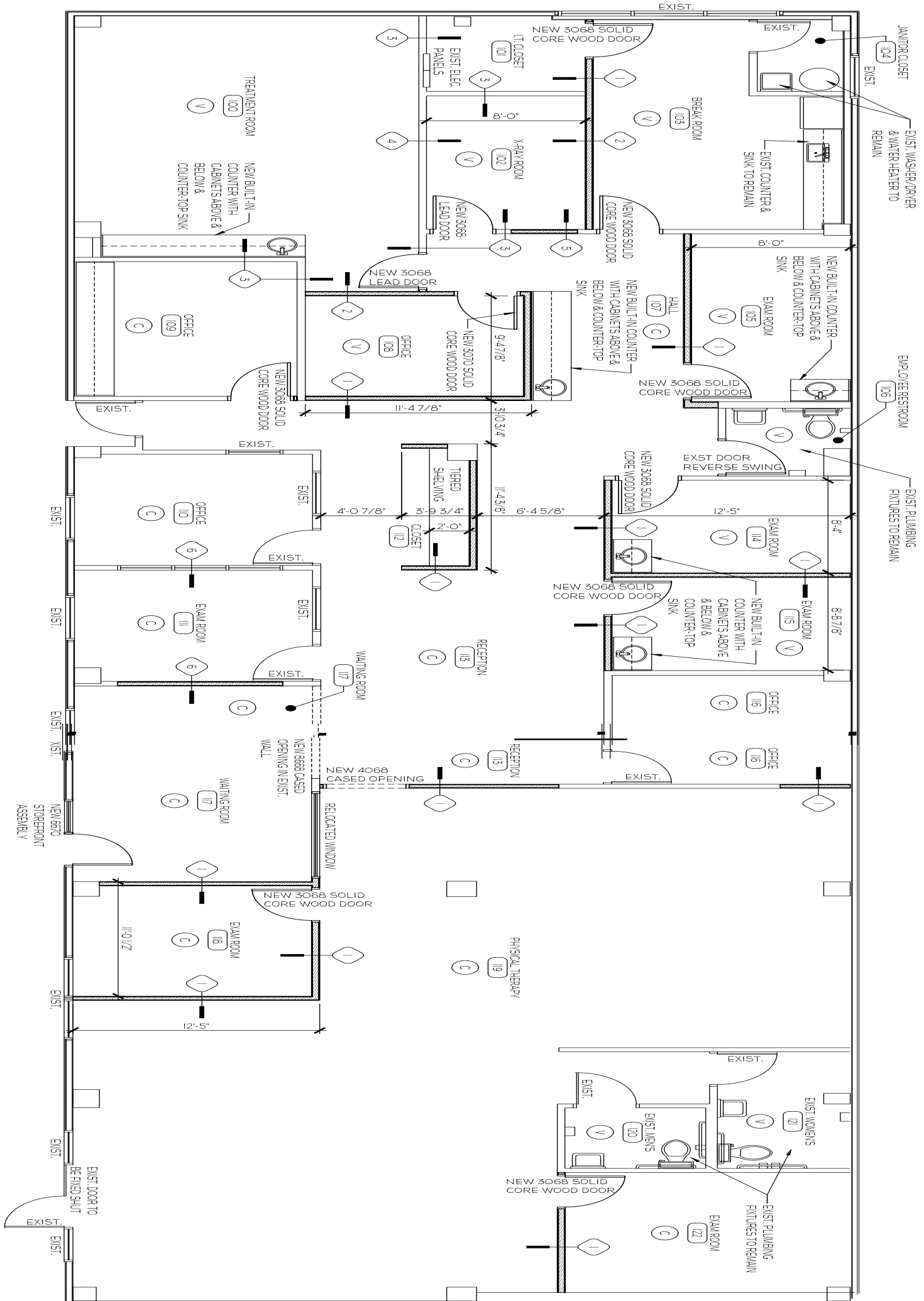
CORNERSTONE

COMMERCIAL REALTY LLC

P.O. Box 16501

Clearwater, FL 33765

www.cornerstonecommercialrealty.com



Approximate layout. Not to scale. Minor modifications may have been conducted after this plan was drawn.