

# ROCK LAKE RANCH

CLEWISTON, FL | HENDRY COUNTY

572.90 ± ACRES TOTAL





This remote high-end ranch is a true paradise hosting an abundance of Whitetail deer with Native and Texas genetics, Axis deer, Osceola turkey, dove and various small game. Perfect for any wildlife enthusiast, this property features three luxury homes which provide unlimited time for relaxation on the front porch with a good book or cup of coffee. The wide-open views overlook the ranch's sanctuary where you can find wildlife grazing on the feeders and stands.

This wonderful, totally private luxury ranch is picture-perfect for family and friends to enjoy year-round. The land supports a variety of hunting with established blinds in prime locations which almost guarantees a perfect spot every time.

The Northwest pasture is home to cows and has been planted in Hermathia/Floralta for hay. The Southwest pasture has been planted in Jig grass which the cows and wildlife love. The ranch has been divided into 6 rotating stations for the cattle and each station has its own water hole. Each aspect of Rock Lake Ranch has been tenderly cared for with much attention and detail.

Along with relaxing views and abundant wildlife, Rock Lake Ranch is in proximity to significant city centers such as Palm Beach, Miami and Naples. This offers a unique experience of remote relaxation while less than a two-hour drive to many city attractions. Built with the avid hunter in mind, you can enjoy the best of both worlds at this well maintained luxury ranch and overall dream recreational retreat.







## SPECIFICATIONS & FEATURES

**Acreage:** 572.90 ± acres

**Sale Price:** \$4,010,300

**Price per Acre:** \$7,000

*Additional 1,500 acres could be available for \$6,000 per acre*

**Site Address:** Roberts Ranch Road, Clewiston, FL 33440

**County:** Hendry

**Road Frontage:** Roberts Ranch Road

**Soil Types:** Predominantly Boca, Riviera, Hallandale, Chobee Fine Sand Loam, Limestone Substratum

**Uplands/Wetlands:** 481.3 ± acres uplands and 91.60 ± acres wetlands

**Grass Types:** Bahia, Jig, and Hermathia/Floralta

**Irrigation/Wells:** 8" well for irrigation

**Water Source:** Well and septic

**Amenities:** Three luxury homes on the property

**Structures:**

- Main house, 2,480 ± SF A/C, Two-car garage, attached. Built in 1988
- Hunting lodge, 1,704 ± SF A/C. Built in 2014
- Single family modular, 1,842 ± SF A/C. Built in 2006

**Taxes:** \$12,890.54 (2018)

**Zoning/FLU:** A-2 and Residential

**Fencing:** High Fence with Constantine wire, fenced and cross-fenced barbwire and hot wire

**Past Surveys Reports:** Survey reports available on request

**Land Cover:** Improved pasture, live oaks and cypress.

**Income Features:** Cattle and hunting

**Conservation Easement:** No

**Current Use:** Cattle, deer management and family recreational retreat

**Potential Recreational Uses:** Hunting, ranching and recreational retreat.

**Game Populations:** Whitetail deer, Axis deer, Osceola turkey, dove and various small game.

**General Points of Interest:** Close proximity to Palm Beach, Miami and Naples.

Live Game Cam  
Footage Available!



Main house



Hunting lodge



Single family modular home











Abundant roaming wild turkeys



Established blinds





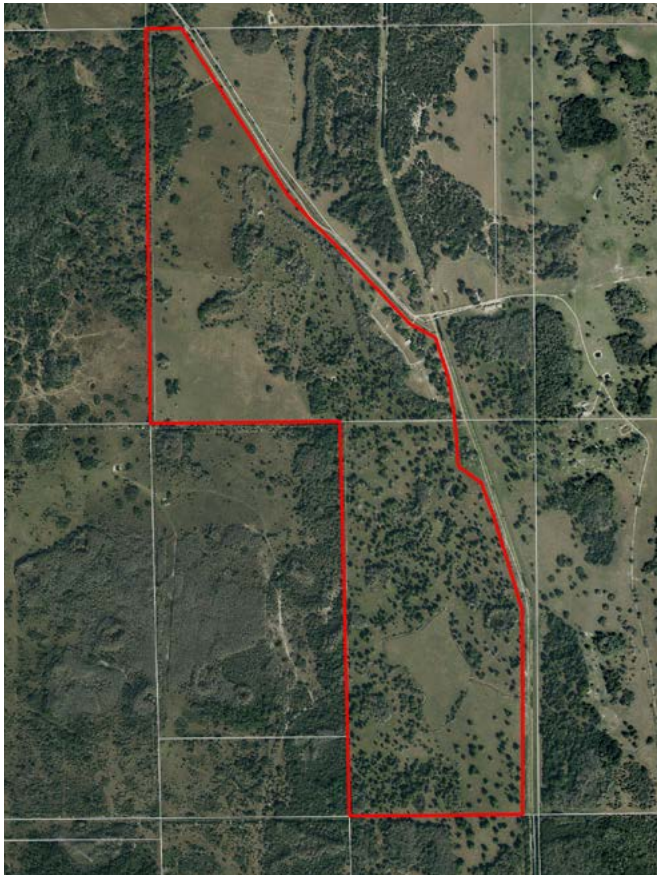
Feeders in the wildlife sanctuary











## LOCATION & DRIVING DIRECTIONS

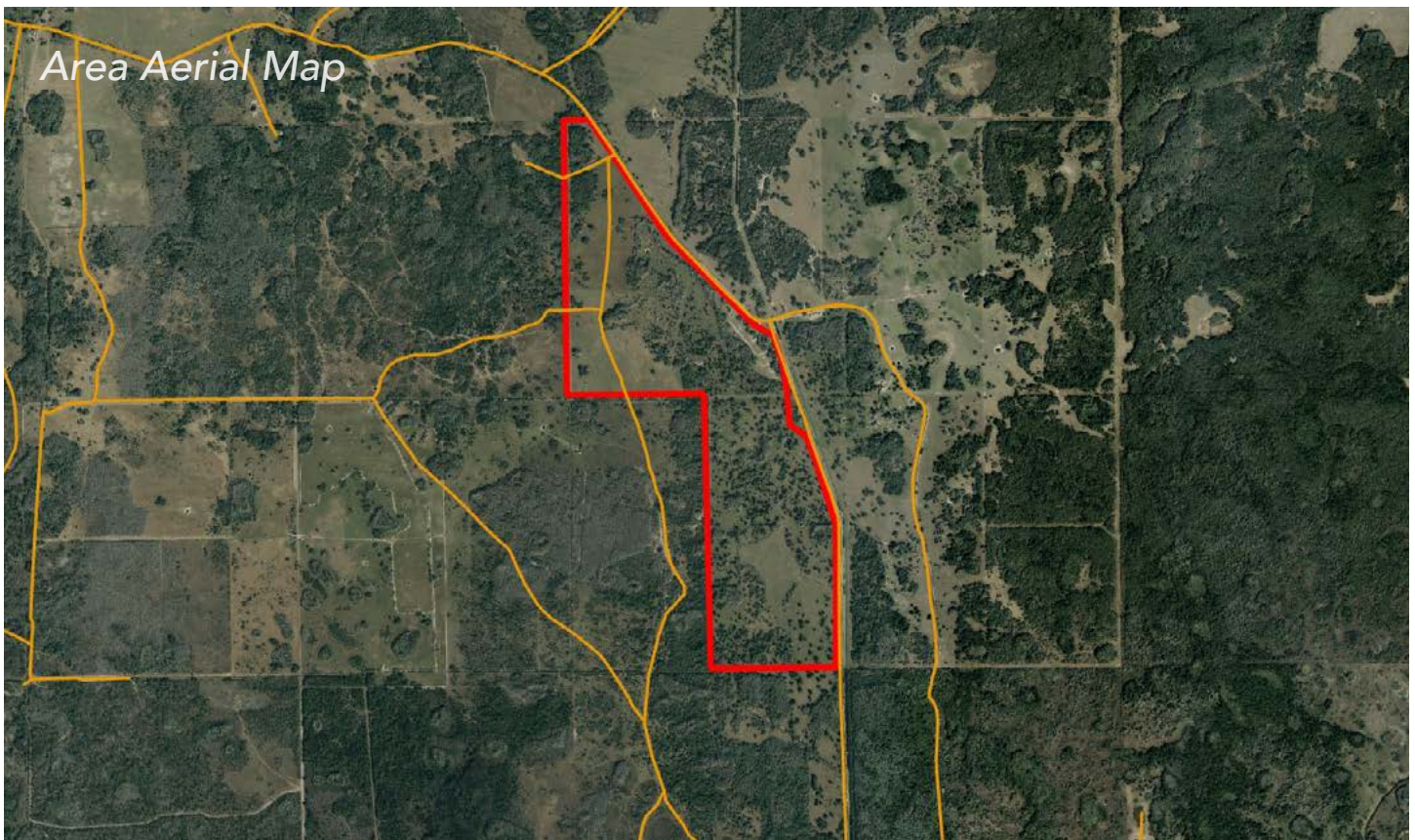
**Parcel IDs:** 1-32-47-23-A00-0003.0000; 1-32-47-26-A00-0001.0000; 1-32-47-35-A00-0002.0000

**GPS Location:** Lat: 26°21'38"N Long: 81°05'51"W · 28.7'

### Driving Directions:

- **From LaBelle, FL** - Head South on SR 29 for 24 miles
- Turn left (East) onto CR 846 for 17.4 miles
- Turn right onto Roberts Ranch Road. Agents will meet you at this point to guide you to Rock Lake Ranch.
- **From Clewiston, FL** - Head West on SR 80 for 3 miles
- Turn left (South) onto CR 833 for 20.12 miles
- Turn right (West) onto CR 846 pass the country store on the left
- Turn right (South) onto Roberts Ranch Road. Agents will meet you at this point to guide you to Rock Lake Ranch

**Showing Instructions:** Listing agents must accompany. Call Sara E. Catlett 863.248.5053 or Paul J. Meador 239.860.4600.







114 N. Tennessee Ave.  
3rd Floor  
Lakeland, FL 33801

**572.90 ± Acres • High End Ranch With 3 Luxury Homes**  
Luxury ranch with well maintained cattle, deer management  
and overall family recreational retreat!

## SREland.com/RockLake

Sara E. Catlett, Associate Broker 863.248.5053 | [SCatlett@SREland.com](mailto:SCatlett@SREland.com)  
Paul J Meador, Associate Broker 863.692.3425 | [PMeador@SREland.com](mailto:PMeador@SREland.com)



**LAKELAND OFFICE:**  
114 N. Tennessee Ave. 3rd Floor  
Lakeland, FL 33801  
863.648.1528 - Main Office

**LAKE CITY OFFICE:**  
356 NW Lake City Avenue  
Lake City, FL 32055  
386.438.5896

©2019 SVN | Saunders Ralston Dantzler Real Estate. All SVN® Offices Independently Owned and Operated  
Saunders Ralston Dantzler Real Estate is regarded as an authority on all types of Florida land and  
conservation easements, transacting over \$2.5 billion in sales since 1996. Offering land, forestry, and  
conservation easement real estate services through Saunders Ralston Dantzler Real Estate and the  
Saunders Real Estate Forestry Group, the Saunders team of land professionals offers advisory and  
transactional services through their home office in Lakeland, FL, the North Florida office in Lake City,  
FL, and the South Georgia office in Thomasville, GA. We provide services to land and commercial clients  
through our commercial real estate brokerage, Saunders Ralston Dantzler Real Estate.



080719-A