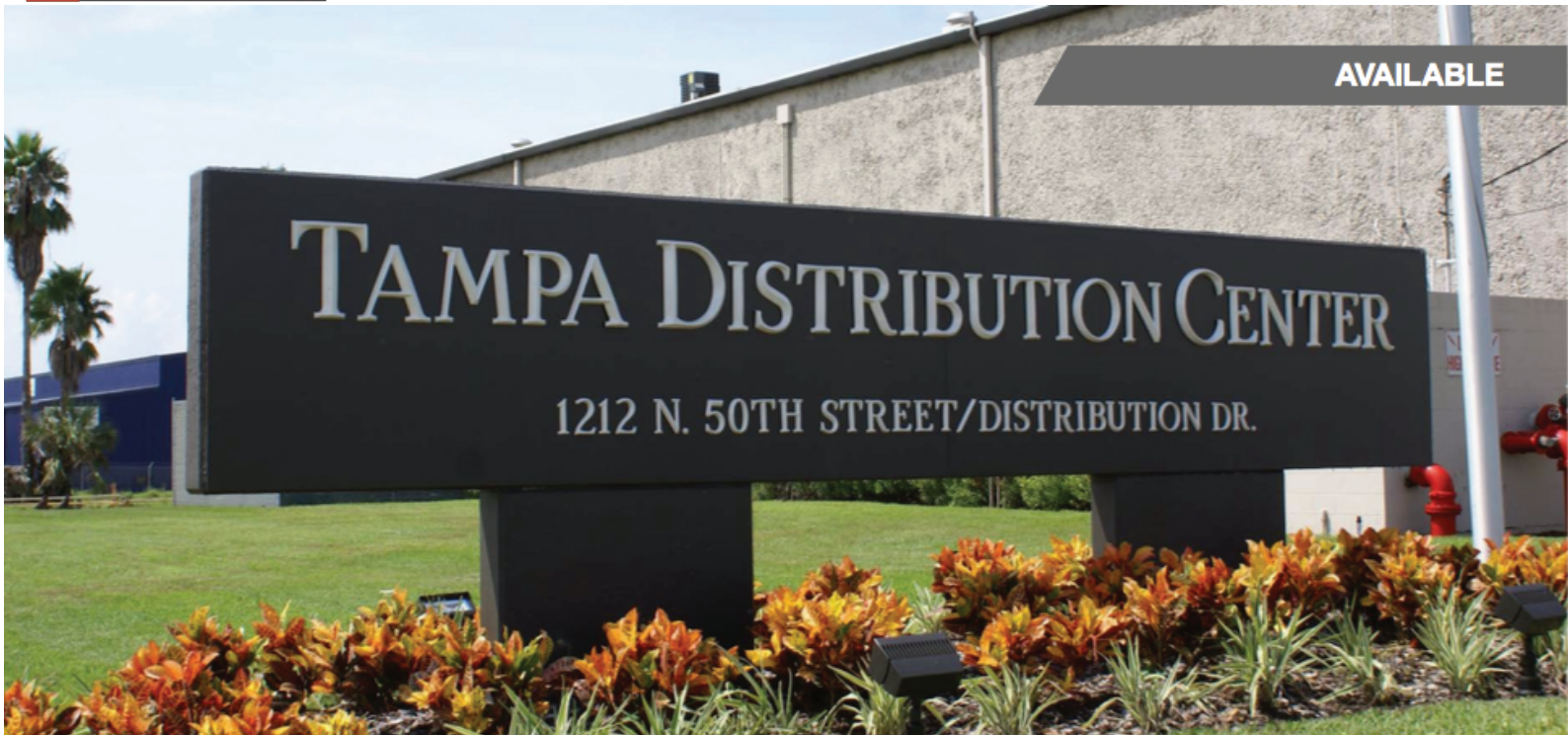


For Sublease



Tampa Distribution Center

1212 N. 50th Street
Tampa, FL 33605



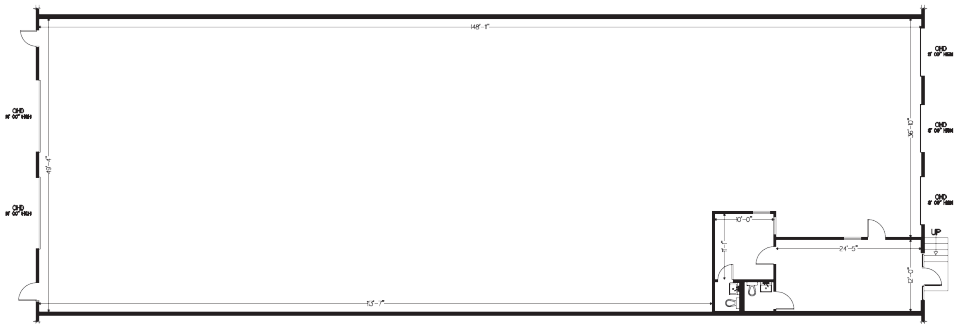
Building #5 Suite 4731

7,500 SF

Space Highlights

- Office: 510+/- SF / Warehouse: 6,990+/- SF
- 3 Dock High Doors / 2 Oversized Drive-In Doors
- 50' x 50' Column Spacing
- 20' Clear Height
- 3 Phase Power
- Tilt-up Construction
- 100% Sprinklered

Floor Plan



Location & Amenities

- Located on 50th Street (East Tampa) off of I-4
- Immediate Access to I-4, Adamo Drive (S.R. 60), & Crosstown Expressway
- Major Hub for Distributors, Manufacturers & Service companies
- Across from Main UPS Hub
- Close proximity to Tampa's CBD & Port of Tampa
- 6 Building 955,000 SF Industrial Park

For More Information Contact:

Jeff Lamm

813.300.5266

jeff@lammproperties.net

Lammproperties.net

Lamm Properties Inc | Lic. Real Estate Broker
3427 Pavilion Palms Circle #209 | Riverview, FL 33578