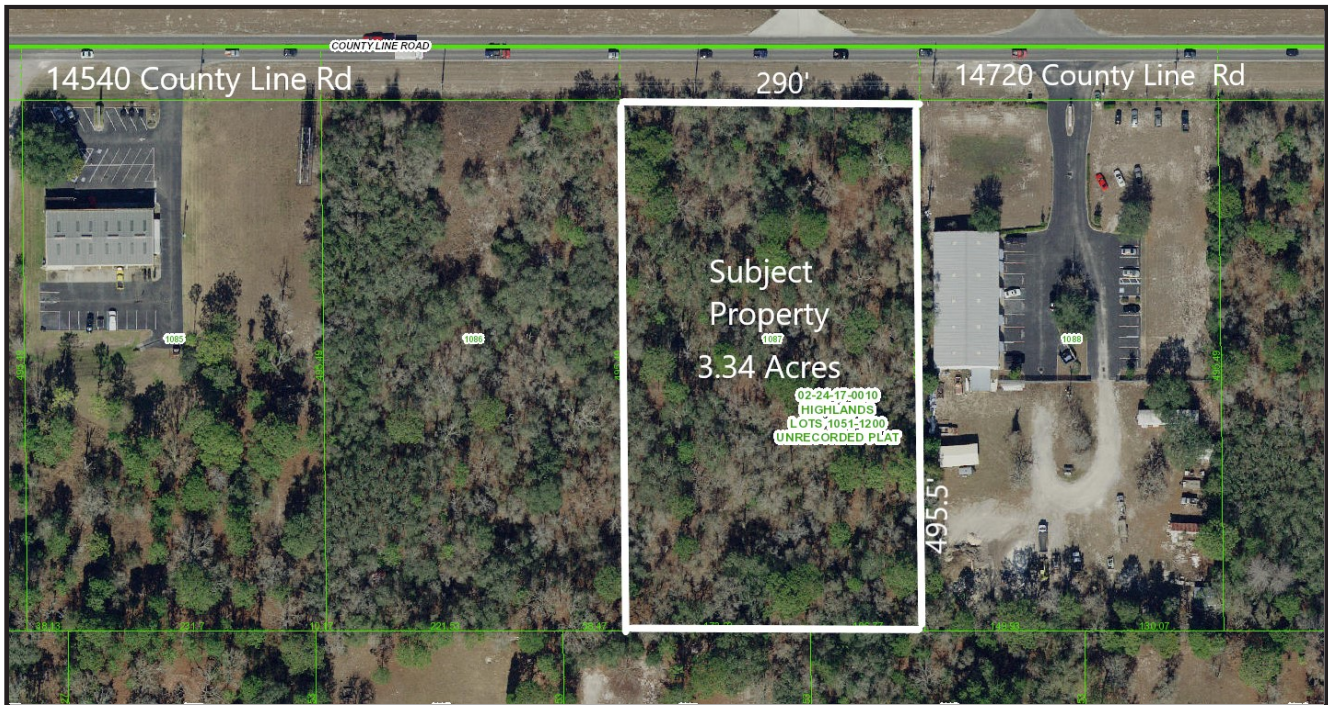


**LAND FOR SALE**

# VACANT COMMERCIAL LAND

**0 COUNTY LINE ROAD SPRING HILL, FL 34610**

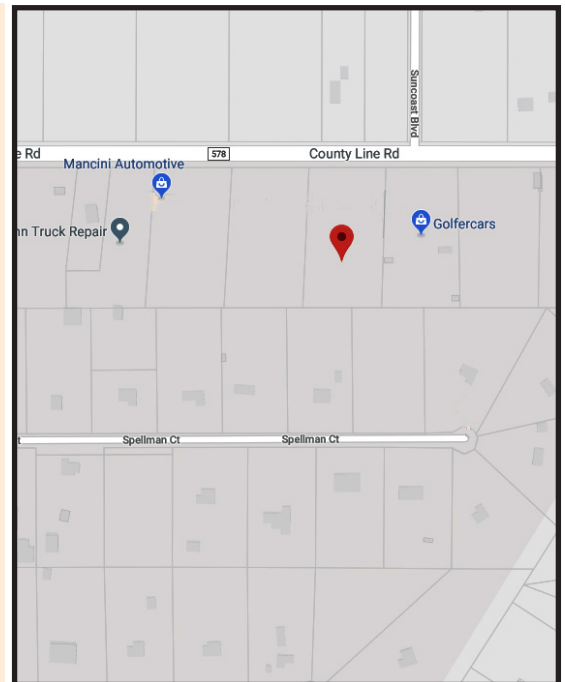


## FEATURES

- 3.34 Acres of Vacant Commercial Land Located in the fast growing area of Northern Pasco County
- 290 +- Feet of Frontage on County Line Rd with 495.5 Feet of Depth
- Zoning C-2 Commercial General
- High and Dry Land Located in Flood Zone X
- Traffic Count 18,500 vehicles per day
- Utilities
  - Electric: Withlacoochee Electric Cooperative
  - Water: Pasco County Utilities
  - Sewer: Septic

## ASKING PRICE

- Available For Sale at \$295,000



**CR** REALTY  
**COMMERCIAL**  
*"The Standard of Excellence"*

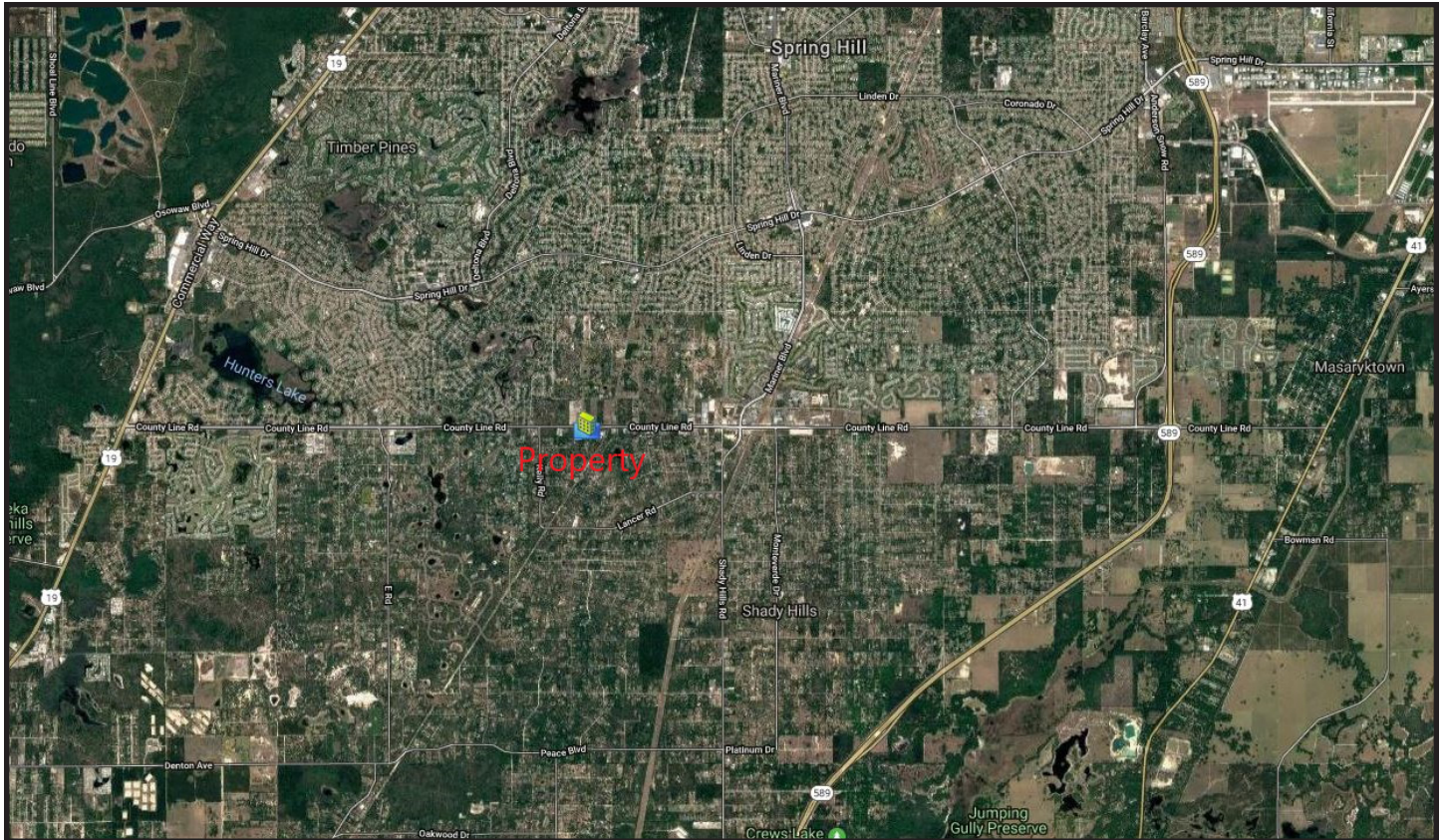
For Sales Information, Please Contact:

**Chris Shryock 727.412.5166 (C)**  
**cshryock@mindspring.com**

**LAND FOR SALE**

# VACANT COMMERCIAL LAND

**0 County Line Road Spring Hill, FL 34610**



Demographics	2018 Population	2018 Households	Median Household Income	Median Age
1 Mile	1,717	675	\$43,316	43.80
3 Miles	39,480	16,749	\$47,859	46.70
5 Miles	93,481	39,358	\$47,215	46.20



For Sales Information, Please Contact:

**Chris Shryock 727.412.5166 (C)**  
**cshryock@mindspring.com**