



**Gil Stevens**  
 Realtor/Broker  
 Keller Williams | Southwest Missouri

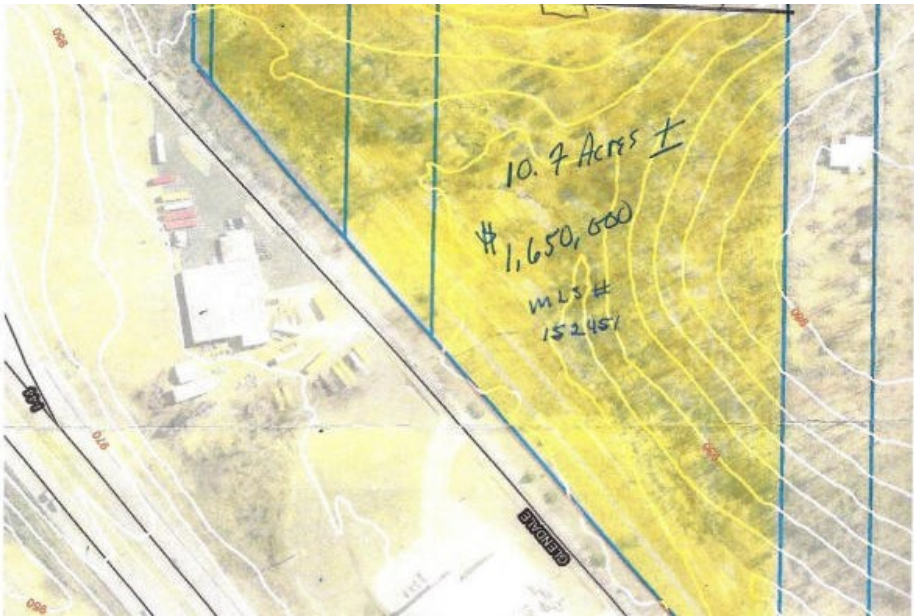
☎ (417) 623-9900  
 📠 (417) 437-1061  
 ✉ gil.stevens@kw.com



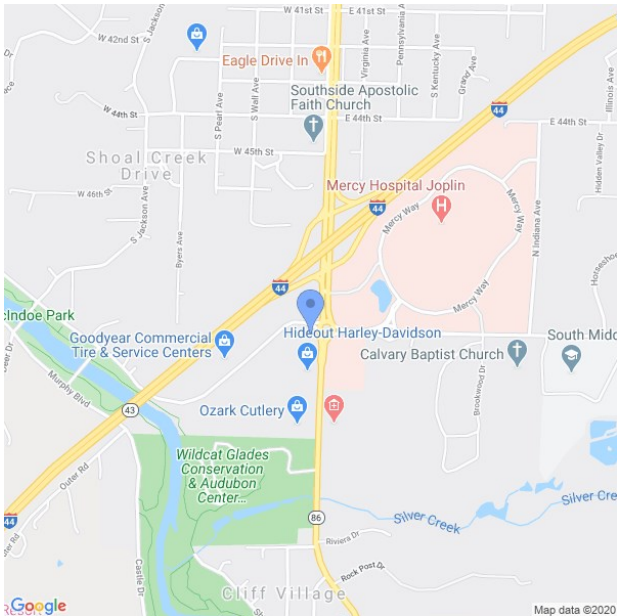
5000 SW HEARNES BLVD, JOPLIN, MISSOURI 64804



**COMMERCIAL • LAND • FOR SALE**



**SALE PRICE \$1,650,000**



**LAND AREA 10 ACRES**

• Sewer line at the west end of property. Zoning map attached

South I44 to 50th Street. Property is on the wet side of HWY. North of Harley Davidson dealership