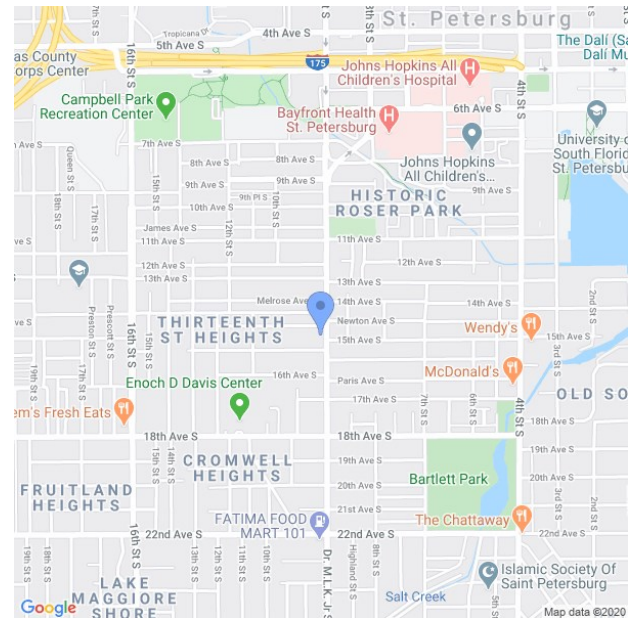
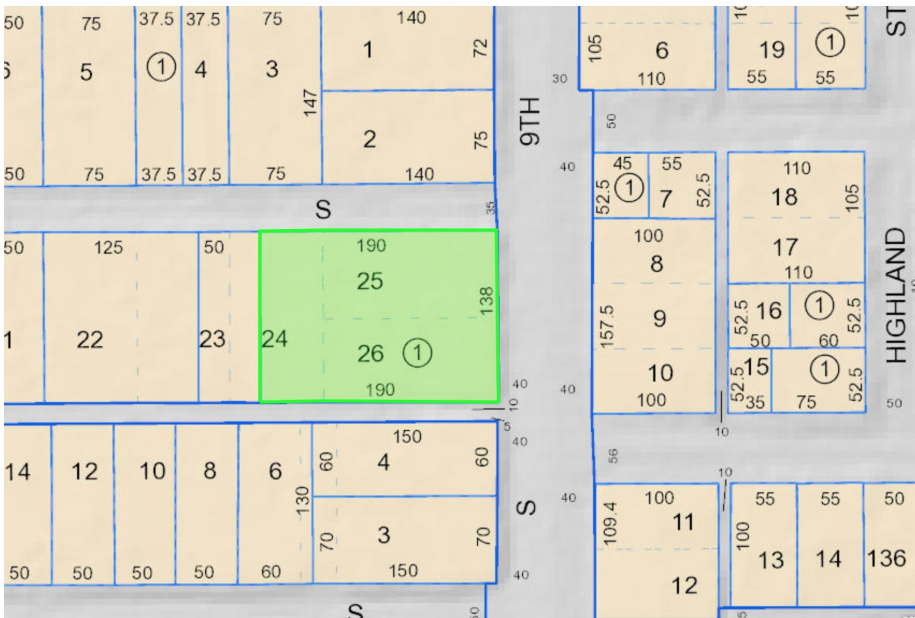


Downtown St. Petersburg Redevelopment

1441 DR. MARTIN LUTHER KING JR. ST. S, SAINT PETERSBURG, FLORIDA 33705



COMMERCIAL • MULTI-FAMILY • FOR SALE



SALE PRICE **\$525,000**
SALE TYPE **DEVELOPMENT**
ZONING **CRT2**
BLDG TYPE **SINGLE TENANT**
CLASS **C**
STATUS **EXISTING**
YEAR BUILT **1925**

STORIES **2**
GROSS BLDG **1,560 SQFT**
LAND AREA **.61 ACRES**
PROJECT SIZE **2**

THE PROPERTY IS LOCATED AT 9TH STREET/MLK SOUTH AND NEWTON AVENUE IN MIDTOWN ST. PETERSBURG, AND IS OFFERED AS A MIXED USE DEVELOPMENT OPPORTUNITY AND SITS AT 29 FOOT ELEVATION. PERFECT COMMERCIAL PROPERTY FOR MIXED USE PROFESSIONAL OFFICES. RETAIL WITH APARTMENTS ABOVE AND TOWNHOMES TO THE REAR OF THE PROPERTY. READY FOR IMMEDIATE DEVELOPMENT.

MARKET **TAMPA/ST PETERSBURG**
SUB-MARKET **SOUTH PINELLAS**
LOT:24 DIST:SP
CITY/MUNI/TWP:CITY OF ST. PETERSBURG
SUBD:FAIR VIEW
LEGAL DESCR **HEIGHTS**

- Excellent Visibility • Corner Lot • In City Limits • Potential Views with Low Rise Redevelopment
- Close Proximity to Historic Roser Park

Cherie Tedesco

Managing Director
KW Commercial | Tampa

☎ 813-865-0700

☎ 813-898-7289

✉ cherie.tedesco@kw.com



The information contained herein has been obtained from sources believed to be reliable but carries no guarantee, warranty, or representation as to its accuracy. Parties to any real estate transaction should independently verify all information and seek the advice of legal, tax and real estate professionals.