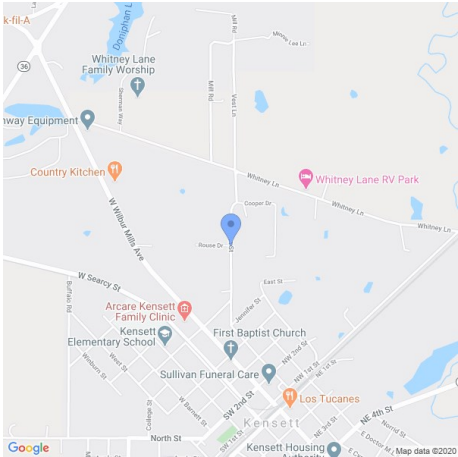
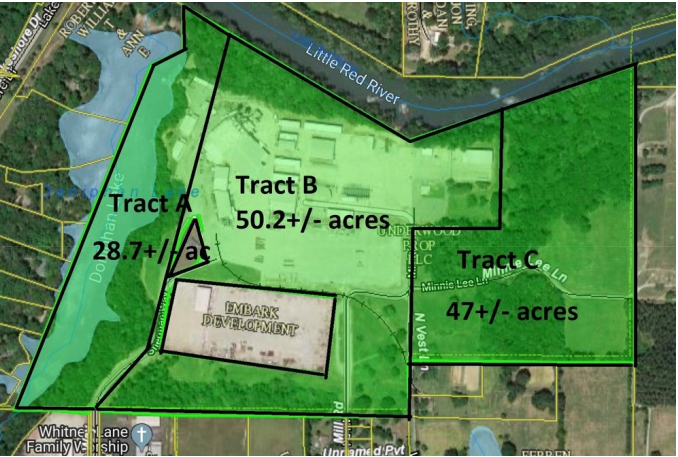


Searcy, AR Industrial Land and Buildings for Sale and Lease



DONIPHAN INDUSTRIAL PARK, KENSETT, ARKANSAS 72082

COMMERCIAL • INDUSTRIAL • FOR SALE



SALE PRICE \$4,239,000

GROSS BLDG 211,575 SQFT
LAND AREA 125.9 ACRES

- 4 WAYS TO BUY: Tract A: 28.7+/- acres with 14,425 square foot industrial building for \$495,000.00
- Tract B: 50.2 +/- acres with 197,150 square foot industrial building for \$3,274,000.00
- Tract C: 47+/- acres for development for 470,000.00 • All 3 tracts together for 4,239,000.00
- 16 buildings total with 15 available for lease for a total of 197,150 available square feet. These buildings vary in square footage and are available at a rate of \$2.50/sqft!

Large industrial complex within city limits of Searcy, AR. Three tracts totaling 125.9+/- acres on the banks of the beautiful Red River. This property features 16 for-lease industrial buildings totaling 211,575 +/- square feet. Tract A (28.7+/- acres) and Tract B (50.2+/- acres) contain the industrial complex, while tract C (47+/- acres) is land with great potential for additional industrial or residential subdivision development. Tracts can be purchased all together or separately...



Johnny Mitchum
Commercial Director
KW Commercial
☎ (501) 940-3231
✉ jmitchum@kw.com



The information contained herein has been obtained from sources believed to be reliable but carries no guarantee, warranty, or representation as to its accuracy. Parties to any real estate transaction should independently verify all information and seek the advice of legal, tax and real estate professionals.