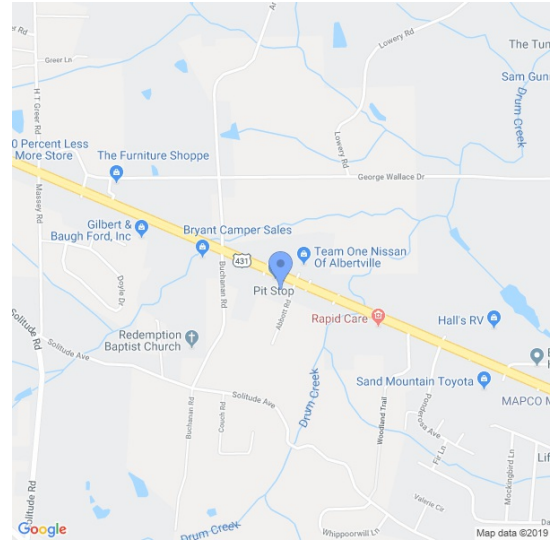
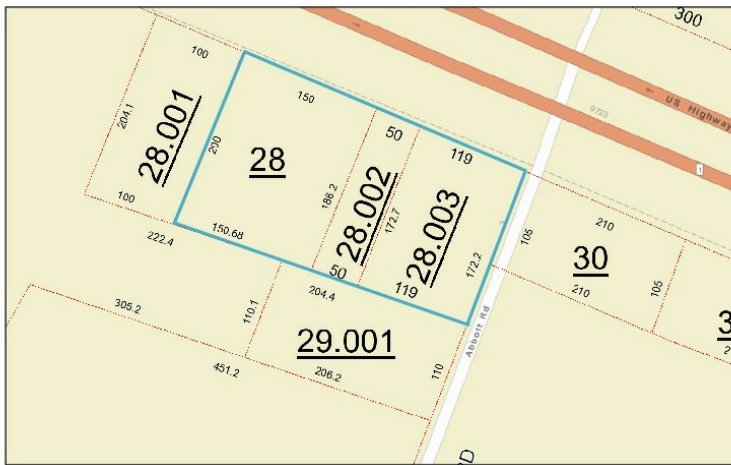


Short Creek Investments LLC

9753 US HIGHWAY 431, ALBERTVILLE, ALABAMA 35950



COMMERCIAL • RETAIL • FOR SALE



SALE PRICE **\$975,000**
SALE TYPE **OWNER USER**
ZONING **COMMERCIAL**
BLDG TYPE **MULTI-TENANT**
CLASS **C**

STATUS **EXISTING**
YEAR BUILT **2013**
GROSS BLDG **1,920 SQFT**
LAND AREA **1.36 ACRES**
1.36 ACRES LEVEL LAND
FRONTING HIGHWAY 431 IN AN
IMPROVEMENTS **AUTOMOBILE BUSINESS**
DISTRICT. ACROSS THE HIGHWAY
FROM NISSAN.
LEGAL DESCR **THREE ADJOINING PARCELS**

- 2 Income producing buildings on site • 1.36 Acres on busy US Highway 431 • Traffic count 35,000+ per day
- Over 300ft frontage on Hwy 431 • Progressive, growing area between Albertville & Guntersville
- List price \$995,000

Prime Acreage with two commercial buildings located on busy highway 431

Located on the busy Highway 431 across from Albertville Nissan



Marsha Whisenhunt

Senior Vice President
The Andrews Group

63950
📞 2563022822
✉️ marsha.whisenhunt@sperrycga.com

